



Quadrant Estate Agents

£395,000



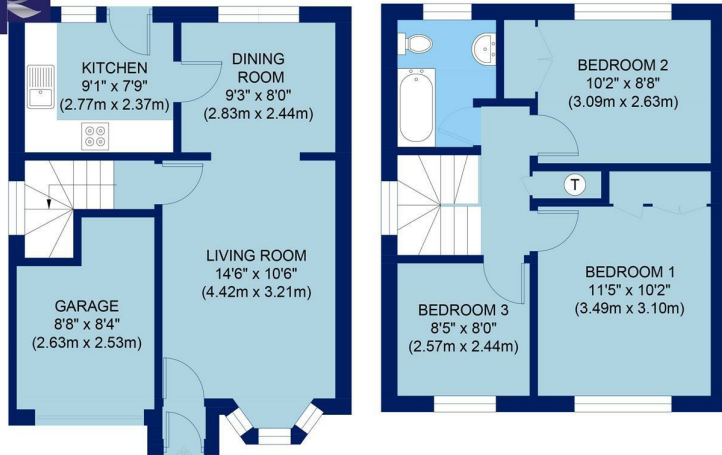
## 47, Osprey Close

Bicester, OX26 6YH

Available with NO UPPER CHAIN we are very pleased to offer this well presented three bedroom detached family home located on the popular Langford Village close to Bicester town centre and local amenities. The property briefly comprises PVCu double glazed windows & doors, gas to radiator heating, entrance vestibule, lounge with feature fireplace, door leading to first floor, archway leading to dining room, door leading to a modern kitchen with door leading to a private landscaped rear garden. On the first floor there are three good size bedrooms and family bathroom. Outside there is a driveway leading to a single garage. An early appointment to view is highly recommended.

[www.quadrant-estates.co.uk](http://www.quadrant-estates.co.uk)





GROUND FLOOR

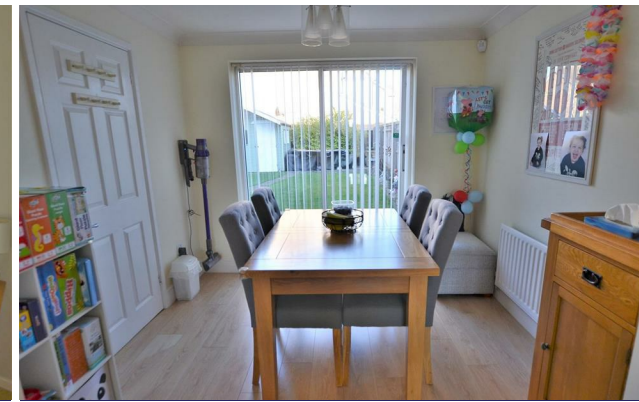
FIRST FLOOR

APPROX. GROSS INTERNAL FLOOR AREA 910 SQ FT / 85.0 SQ M

All measurements of walls, doors, windows and fitting and appliances, including their size and location, are shown as standard sizes and therefore cannot be regarded as a representation by the seller.

## ACCOMMODATION

- NO UPPER CHAIN
- Popular Langford Village
- Three good size bedrooms
- PVCu Windows & doors.
- Close to amenities & Town Centre
- Landscaped rear garden
- Gas to radiator heating
- Modern Kitchen
- Lounge / Dining room
- Private driveway leading to garage



10Market Square, Bicester, Oxfordshire, OX26 6AD

t 01869 241166

sales@quadrant-estates.co.uk

[www.quadrant-estates.co.uk](http://www.quadrant-estates.co.uk)

IMPORTANT: we would like to inform prospective purchasers that these sales particulars have been prepared as a general guide only. A detailed survey has not been carried out, nor the services, appliances and fittings tested. Room sizes should not be relied upon for furnishing purposes and are approximate. If floor plans are included, they are for guidance only and illustration purposes only and may not be to scale. If there are any important matters likely to affect your decision to buy, please contact us before viewing the property.